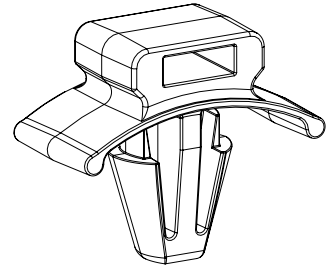
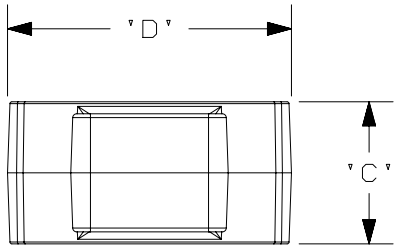



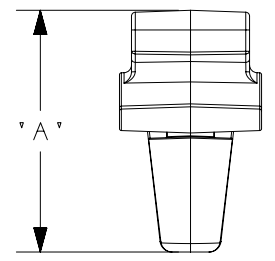
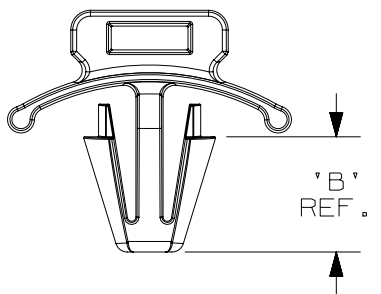
THIS COPY IS PROVIDED ON A RESTRICTED BASIS AND IS NOT TO BE USED IN ANY WAY DETRIMENTAL TO THE INTERESTS OF PANDUIT CORP.

PANDUIT PART NO.	USE WITH THESE CABLE TIE CROSS-SECTIONS	DIMENSIONS				WEIGHT lbs/100pcs (g)
		'A'	'B'	'C'	'D'	
PWMS-H25	MINIATURE INTERMEDIATE STANDARD	.62 (15.7)	.31 (8.0) REF	.37 (9.3)	.71 (18.0) REF	0.13 (60)



NOTES:

- SEE WWW.PANDUIT.COM FOR PART NUMBER SUFFIX DESIGNATION FOR PACKAGE SIZE, MATERIAL AND COLOR.
- (\* ) DIMENSIONAL VARIANCE IS POSSIBLE DUE TO MOLDING PROCESS RELATED SINK MARKS.
- APPLICATION SPECIFICATION:  
HOLE DIAMETER: .229 (5.8) - .255 (6.5)  
PANEL THICKNESS: .105 (2.7) (MAX)
-  BAG MAY CONTAIN EXTRA PIECES TO COMPENSATE FOR VARIANCE IN THE PACKAGING PROCESS. PANDUIT ASSURES MINIMUM PIECE COUNT AS STATED ON THE BAG.



TITLE		PWMS-H25 PUSH WING MOUNT CUSTOMER DRAWING		
ITEM REVISION NAME		G00145DX/01		
DATASET FILE NAME		G00145DX_DC_GB0239EW_08/01		
UNLESS OTHERWISE SPECIFIED, DIMENSIONAL TOLERANCES ARE: IN [ mm ]		MATERIAL:		
.x ± 0.05 [ 1.3 ]		.xxx ± 0.01 [ 0.25 ]		
.xx ± 0.02 [ 0.5 ]		ANGLES ± 5 °		
DRAWN BY		DATE	CHK	SCALE
CGSM		3/6/97	JADE	2:1
THIRD ANGLE PROJECTION		DRAWING NUMBER:		
SHT 1 OF 1		GB0239EW		
REV	DATE	BY	CHK	APR
8	1/26/2021	RVU	JADE	RMHI
7	12/17/10	BWG	MJVE	
DESCRIPTION		ECN		
ADDED NOTE 4.		GAECN05868		
REVISED NOTE 1. MAT'L WAS NYLON 6/6.		GB0239EW		

D10100DA/20